

东莞市恒生传感器有限公司

品名： 遮蔽式型光控开关

Products Name: Photointerrupter

型名 : HSO-IW-0051/0052

Product Number: HSO-IW-0051/0052

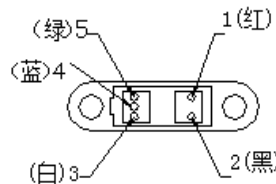
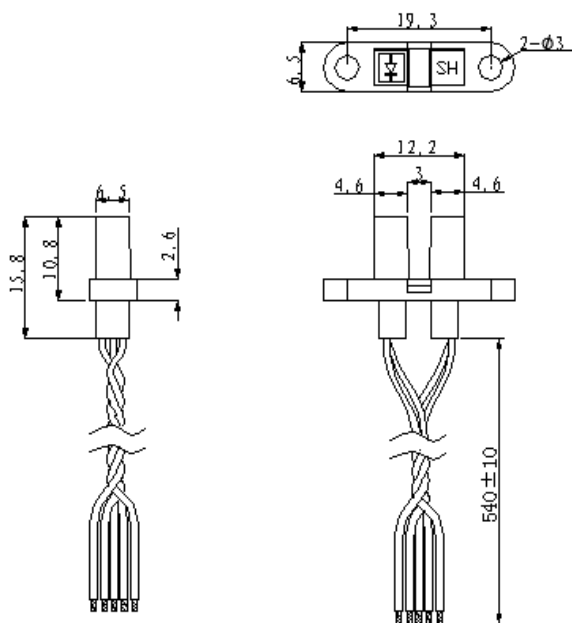
●Applications

Optical control equipment

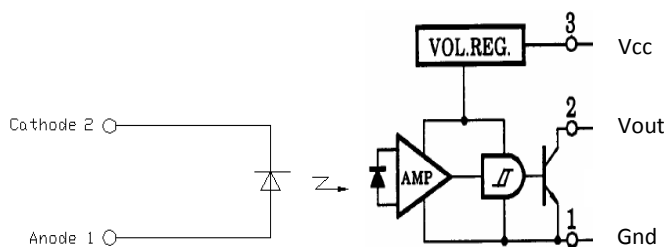
●Features

- 1) High reliability.
- 2) Fast response.
- 3) Long service life.
- 4) Wide range of applications.

●External dimensions (Units:mm)



●Connection Diagram



●绝对最大定格 Absolute Maximum Ratings (Ta=+25°C)

项目		记号	规格	单位
Parameter		Symbol	Ratings	Units
发光侧 Input	直流顺电压 Forward DC Current	IF	60	mA
	直流逆电压 Reverse DC Voltage	VR	5	V
	允许损失 Power Dissipation	PD	100	mW
受光侧 Output	集电极与发射极之间的电压 Collector-Emitter Voltage	VCE0	17	V
	发射极与集电极之间的电压 Emitter-Collector Voltage	VECO	--	V
	集电极电流 Collector Current	IC	30	mA
	集电极功率损失 Collector Power Dissipation	PC	200	mW
动作温度 Operating Temperature Range	Topr	-25~+85	°C	
保存温度 Storage Temperature Range	Tstg	-40~+100	°C	
焊锡温度 Soldering Temperature(5 sec)	Tsol	260	°C	

●电气的・光学特性

Electrical Optical characteristics (Ta=+25°C)

	项 目 PARAMETER	記 号 SYMBOL	测定条件 Test Conditions	最小	标准	最大	单位
				Min	Typ	Max	Units
发光侧 Input	顺电压 Forward Voltage	V _F	If=60mA	—	1.3	1.6	V
	逆电流 Reverse Current	I _R	V _R =5V	—	—	10	uA
	发光波长 Peak Wavelength	λ _p	If=60mA	—	940	—	nm
受光侧 Output	电源电压 Supply Voltage	V _{cc}	—	4.5	—	17	V
	供给电流 High level supply current	I _{ccH}	HSO-IC-0051 E _v =0L _x *2	—	3	6	mA
			HSO-IC-0052 E _v =200L _x *2	—	3	6	mA
	供给电流 Low level supply current	I _{ccL}	HSO-IC-0051 E _v =200L _x	—	3	6	mA
HSO-IC-0052 E _v =0L _x			—	3	6	mA	
应答时间 Switching Time	延迟时间 L→H propagation time	t _{PLH}	HSO-IC-0051 *2 E _v =200L _x , R _L =280Ω	—	3	9	us
			HSO-IC-0052	—	2	6	us
	延迟时间 H→L propagation time	t _{PHL}	HSO-IC-0051 *2 E _v =200L _x , R _L =280Ω	—	2	6	us
			HSO-IC-0052	—	3	9	us
	上升时间 Rise Time	t _r	*2 E _v =200L _x , R _L =280Ω	—	0.1	0.5	us
	下降时间 Fall Time	t _f	*2 E _v =200L _x , R _L =280Ω	—	0.05	0.5	us

Swichng Time Test Circuit

